

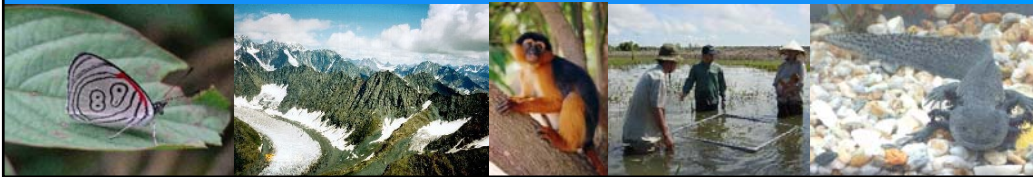


DARWIN200



Overview of LTS International's input to the Darwin Initiative

Alex Forbes, LTS International



Introduction to LTS International



- Since established in 1973 has been supporting sustainable development worldwide;
- Independent & employee owned;
- Primary focus is on natural resources management including biodiversity, forestry, water, communities;
- Other areas of delivery include climate change, governance, communications, learning and knowledge sharing;
- Manage a variety of conservation projects worldwide with a strong African track record;
- Clients include Defra, DfID, EU, and government ministries.



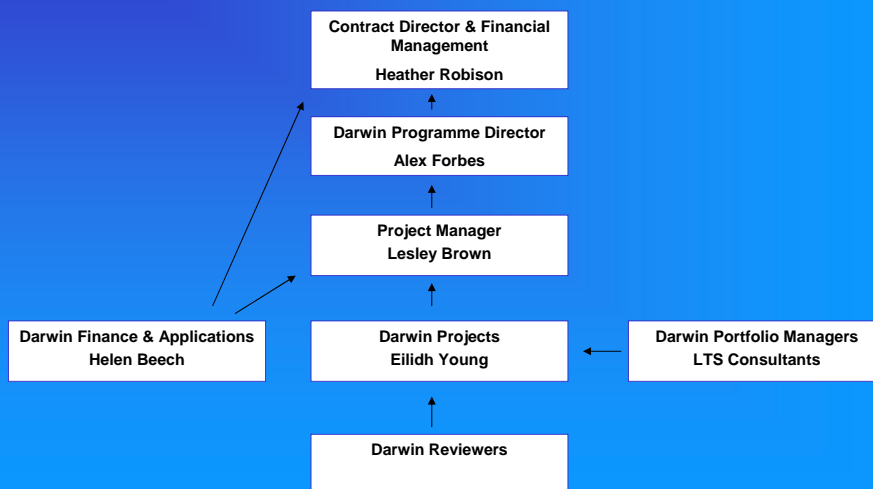


LTS Extended Network

- Technical support provided by a wide range of conservation practitioners including:
 - Edinburgh University
 - Royal Botanic Garden, Edinburgh
 - Centre for Ecology and Hydrology (CEH)



Structure of the LTS Darwin Team



Services we provide to Defra



- Applications management
- Project management support
- Financial administration
- M&E of projects & programme



M&E of the Darwin Initiative



- The Darwin Initiative monitoring and evaluation programme is informed by:
 - 1) The goals and indicators for the CBD, CMS and CITES,
 - 2) The Darwin Initiative goal and purpose which reflect the conventions' goals, and;
 - 3) Recognised M&E principles and tools (i.e. logical frameworks, significant change methodology, standard OECD definitions upon which DI monitoring terms are based – see the glossary at the end of the document).



M&E of the Darwin Initiative II

- Since the establishment of the Darwin Initiative it has placed an emphasis on monitoring projects and learning lessons from its work.
- There are 2 broad approaches to M&E in the Darwin Initiative
 - Performance Monitoring
 - Impacts Evaluation



M&E Programme

- Project M&E
 - Half Year Reports
 - Annual report reviews
 - Final report reviews
 - Mid Term Reviews
- Programme M&E
 - Evaluation of Closed Projects
 - Thematic Reviews





Project Reporting

- Projects reports are intended to ensure projects accountability to the Darwin Initiative against its set objectives as detailed at application
- Projects are reviewed against the following with the final selection made by Defra:
 - Partnerships
 - Impact & Legacy
 - Progress against activities, outputs & purpose
 - M&E
 - Sustainability
 - Impact
 - Legacy
 - Expenditure



Mid Term Reviews

- LTS carries out MTRs on 10% projects that reach the half way stage (approx. 18 months).

Purpose:

To assist and increase the efficiency and effectiveness of a particular project as well as draw out lessons for the Darwin Initiative as a whole.

- An MTR is undertaken in close collaboration with the Darwin Project Leader and the host country institutions.
- The MTR is informed through consultative and participatory work sessions and semi-structured interviews with project team members, project beneficiaries and other project stakeholders.



MTR Selection Criteria

- Significant positive biodiversity impact/legacy
- Innovation
- New funding area
- Lessons learning
- Thematic reviews
- Value for money
- Problem solving
- Geographic spread



Programme M&E Evaluation of Closed Projects (ECPs)

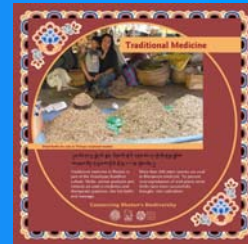
- Used to provide information on the impact and legacy of the Darwin Initiative
- The approach applied by the Darwin Initiative M&E component is to select *clusters* of “closed” projects based on either a country, theme or eco-region.
- Undertaken in close consultation with UK based and host country institutions, and involve relevant in-country beneficiaries and stakeholders.
- Recent ECPs have been carried out in Egypt, Morocco and Madagascar

Programme M&E Thematic Reviews



Objectives:

- To analyse and document the contribution of the Darwin Initiative towards the Conventions' Objectives, Programmes of Work & Cross Cutting Issues;
- Identifying best practices and lessons learned;
- Formulate recommendations on how the DI can best support the objectives and work programme within the context of the DI's own objectives .



Resources Produced as a Result



- Website
- Briefing Notes
- Workshops (also used as a means of M&E)
- Newsletter
- Support to Defra's wider communications

