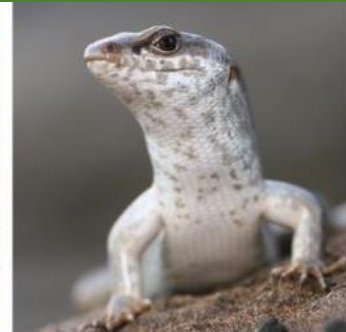


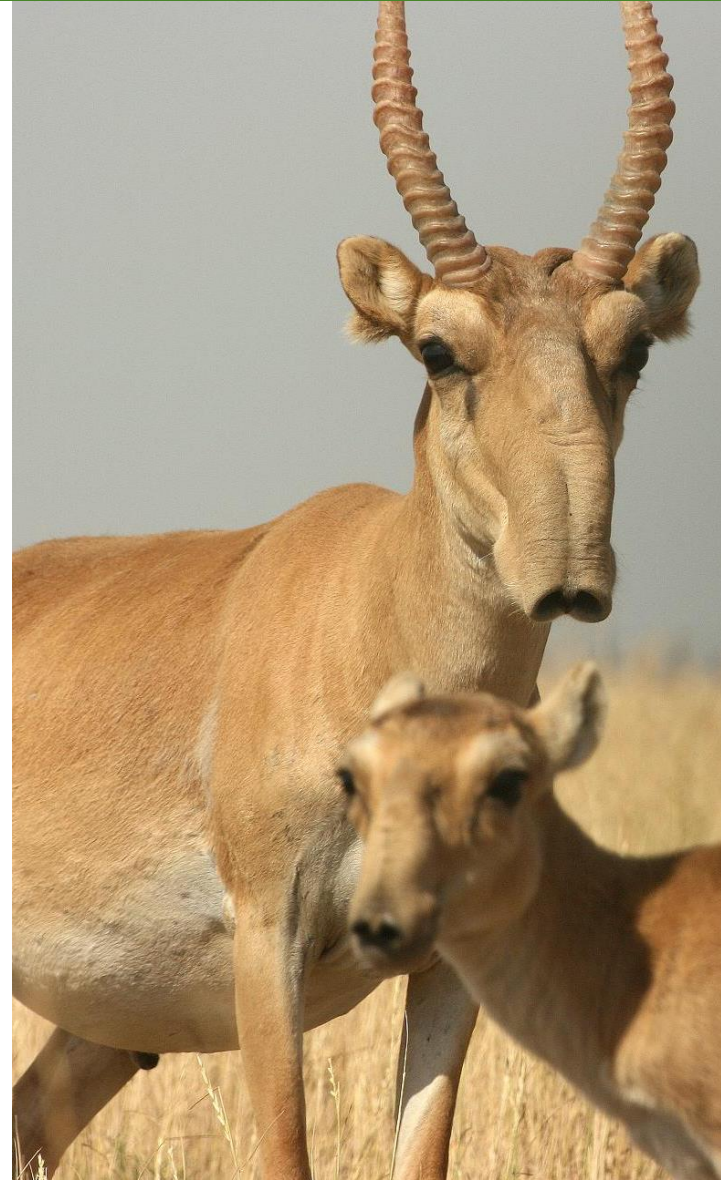
Darwin Initiative

Stage 2 Webinar – Round 31: What Makes a Good Application?



Agenda

- Welcome
- Darwin Expert Committee
Member Presentation
- Questions



Welcome!



Welcome to Stage 2 applicants from Round 31 of Darwin Initiative!

Your panelists:



Matthew Gollock

- Programme Lead – Aquatic Species and Policy Conservation Programmes - Zoological Society of London
- Darwin Expert Committee member



Eilidh Young - NIRAS

- BCFs Senior Administrator
- Darwin Initiative Focal Point



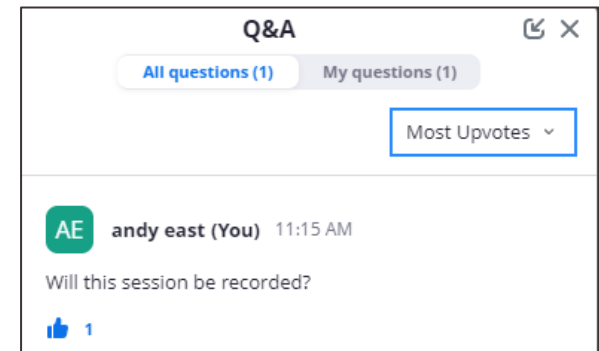
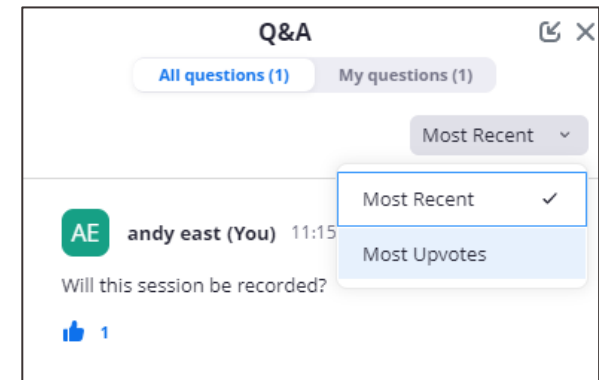
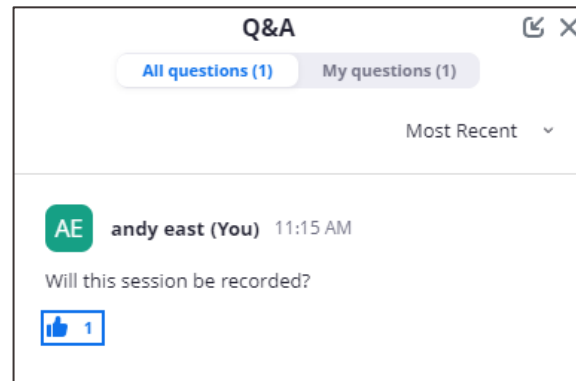
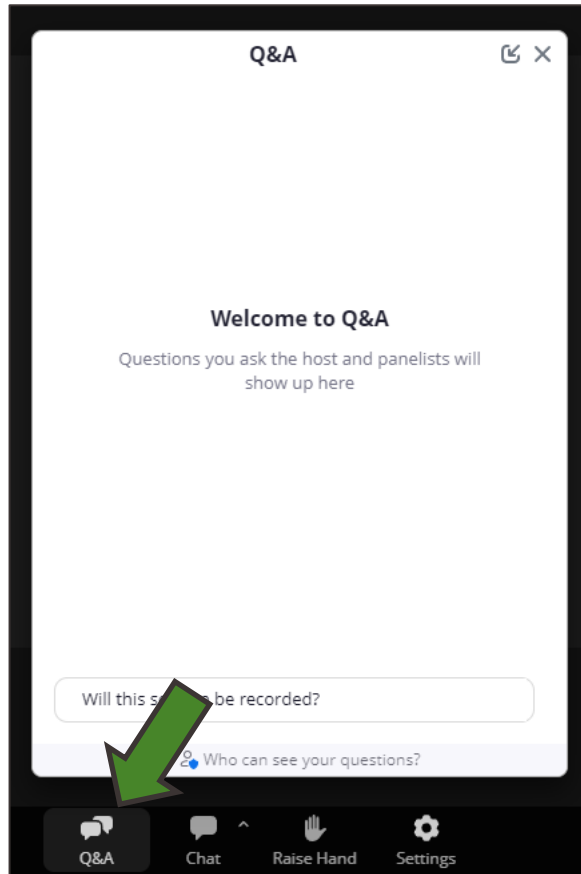
Andy East – NIRAS

- BCFs Communications and Workshops Lead

Key contact for application queries: [**BCF-Darwin@niras.com**](mailto:BCF-Darwin@niras.com)

Flexi-Grant specific queries: [**BCF-Flexigrant@niras.com**](mailto:BCF-Flexigrant@niras.com)

Housekeeping





Proposals:
What is the
Darwin Expert
Committee
looking for?

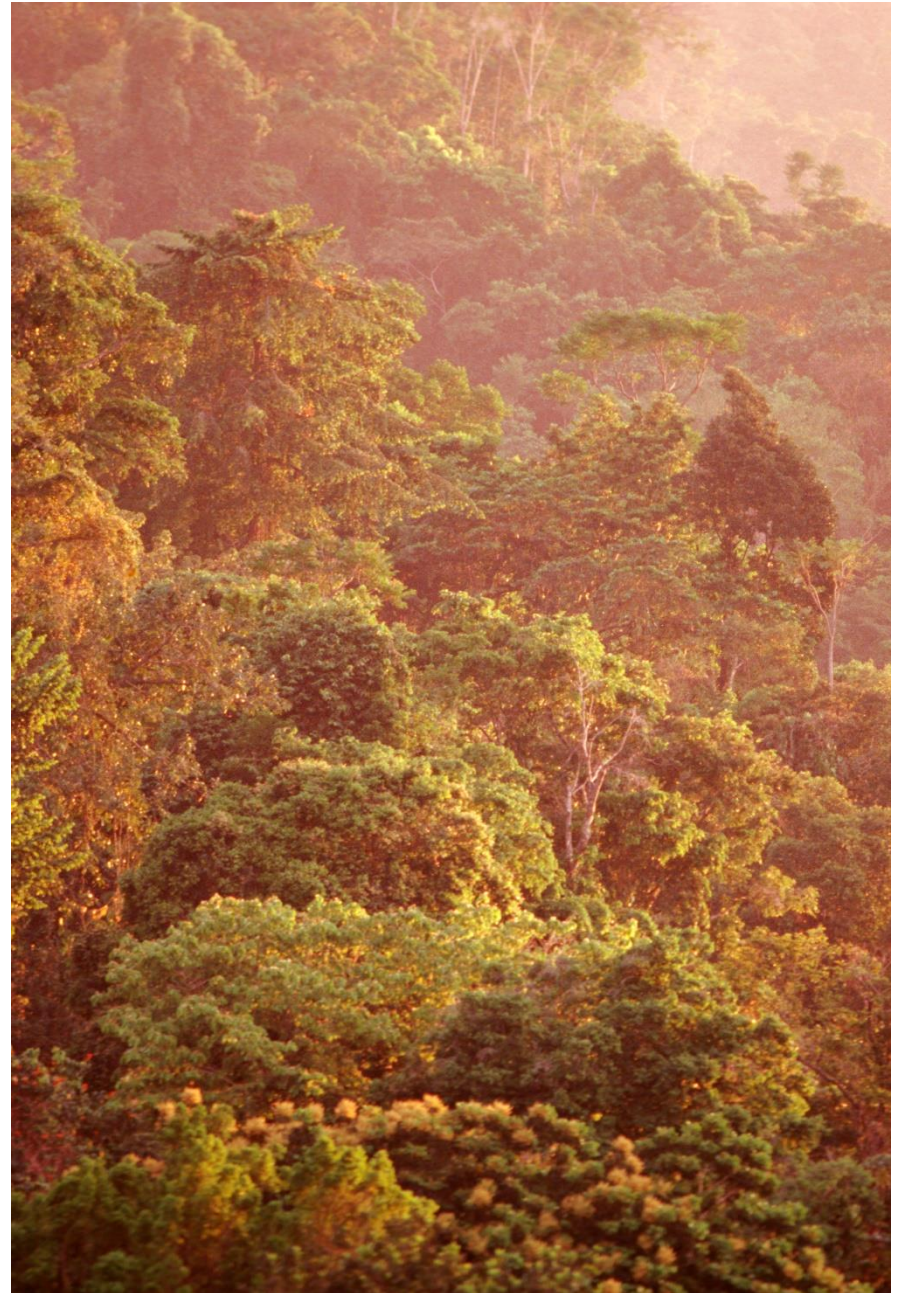


Who are the Darwin Expert Committee (DEC)?

- c. 25 experts - academics, conservation practitioners, policy researchers, independent consultants etc
- Contribute to Darwin strategy and feedback on ad hoc requests from Defra and NIRAS.
- Act as ambassadors for Darwin.
- Review and score Main, Extra, C+C and Innovation proposals and make recommendations to Defra.

Reviewing Of Applications

- Three DEC reviewers consider each application
- Scoring criteria in Guidance – same for both stages
- Sift meeting discussions on high and mid-scoring and differentials - agree shortlist at Stage 1 and at Stage 2
- DEC recommends a list to Defra/Ministers who make the final decision.

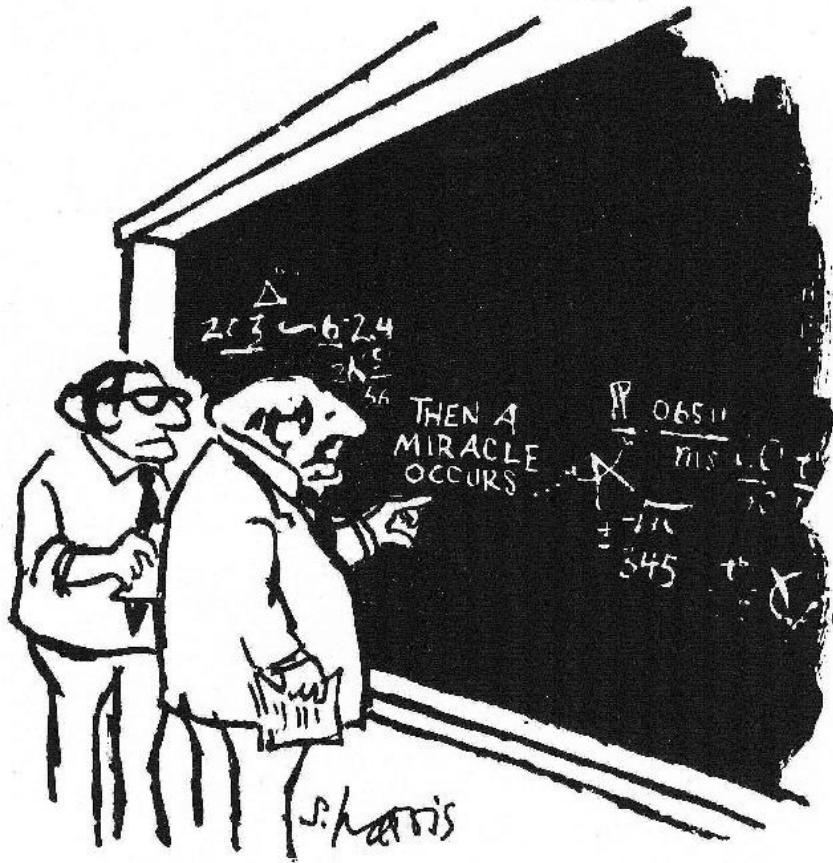




What makes a good application?

- Clearly written and concise.
- Answer the questions.
- Ambition and innovation are realistic.
- Biodiversity and livelihoods outcomes, supporting international Conventions.
- Clear route to outcomes and impact.
- Clear and realistic Theory of Change.
- Builds off best practices and evidence.
- How to embeds equity, gender, youth.
- UMIC justification.
- Compelling partners, CVs and LoS.

Project logic



"I think you should be more explicit here in step two."

- Underlying problem statement and project logic are vital
- Should be clear from a strong logframe.....

	INDICATORS	MEANS OF VERIFICATION
Number of students.	Percentage of Grades 5-6 primary students continuing on to high school.	Comparison of primary high school enrolment records.
Reading proficiency among Grades 5-6.	Reading proficiency among children in Grades 5-6	Six monthly reading proficiency tests using national assessment tool.
Students with summer reading program.	Number of students completing summer reading program.	Summer camp attendance records.
Number of students.	Number of summer camps completed.	Summer camp records.

logframe

- Central to reviewers' assessment of your application
- Sense check – how will the activities - outputs - outcomes - impact chain work....
- Think about your assumptions and challenge them.
- Specific targets and baselines – better to have numbers than loose percentages
- Keep it clear - reviewers will read lots of logframes....

Key things to remember

- Address any feedback from Stage 1.
- Title – clear but interesting – get our attention upfront.
- Provide enough context - don't assume any prior knowledge
- Demonstrate credibility - partners, expertise, and track record (strong CVs help)
- Stick to word counts and don't rely on additional links or resources.



Key things to remember

- Demonstrate links to and knowledge of international Conventions and Treaties.
- Explicit biodiversity outcomes - which species/ecosystems will benefit.
- Explicit poverty outcomes - tangible improvements in well-being.
- Strong social equity considerations.

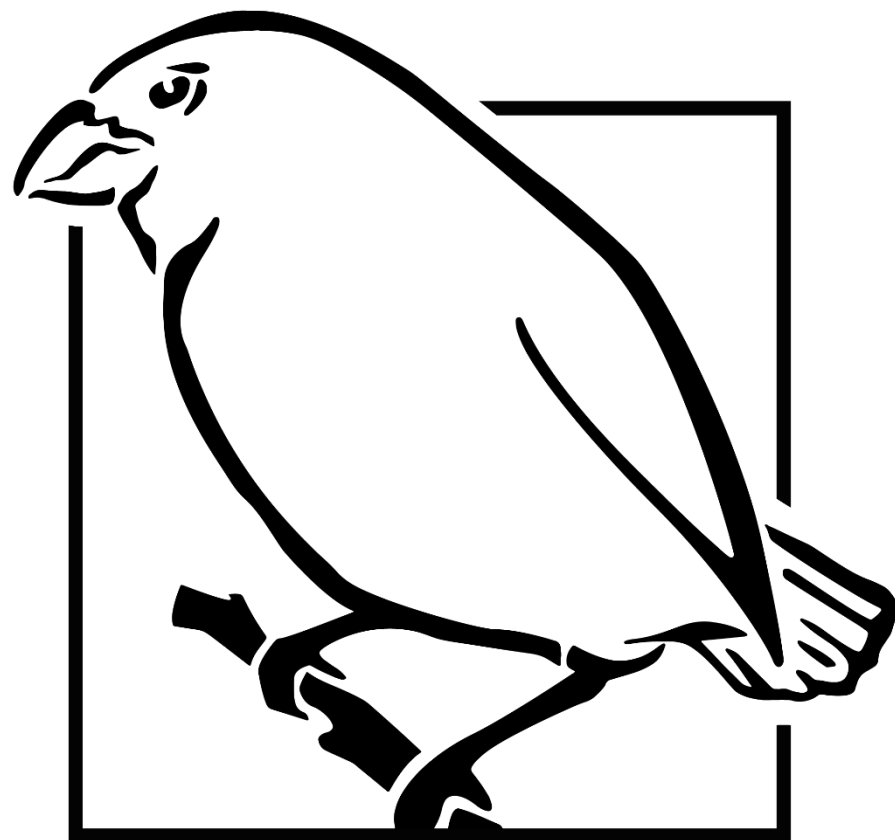


Key things to remember

- Well articulated changes – and explain how will be measured.
- M&E plan should align with the log-frame
- Budget – balance between lead and partners, in-country and elsewhere; co-finance.
- **Make your application stand out!**
How does it differ from the norm? Is it innovative, using new methodology or scalable? *Or is it just really clear and well written....?*



Good luck!



DARWIN
INITIATIVE
