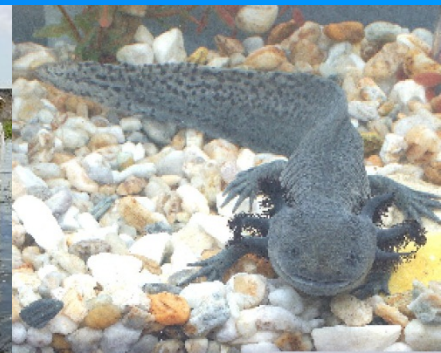




The Darwin Initiative

Workshop for Stage 2 applicants





Implementable Projects

- Project Design – Structure
- The Project Design – Theory
- Demonstrating your Impact



Implementable Projects

- Use the Application form, it is there to help you analyse and structure your project concept into an implementable project
- Just don't start at Q1 !!



Define your impact pathway

- Back track from Section 18 'legacy' through to inputs (Section 25 'Activities')
- Section 18, 19, 14, and back to Section 13.
- Leading to Section 25



Output

- A specific, direct, tangible deliverable



Outcome

- A change in state that is a consequence of the outputs and other factors (captures in your assumptions)

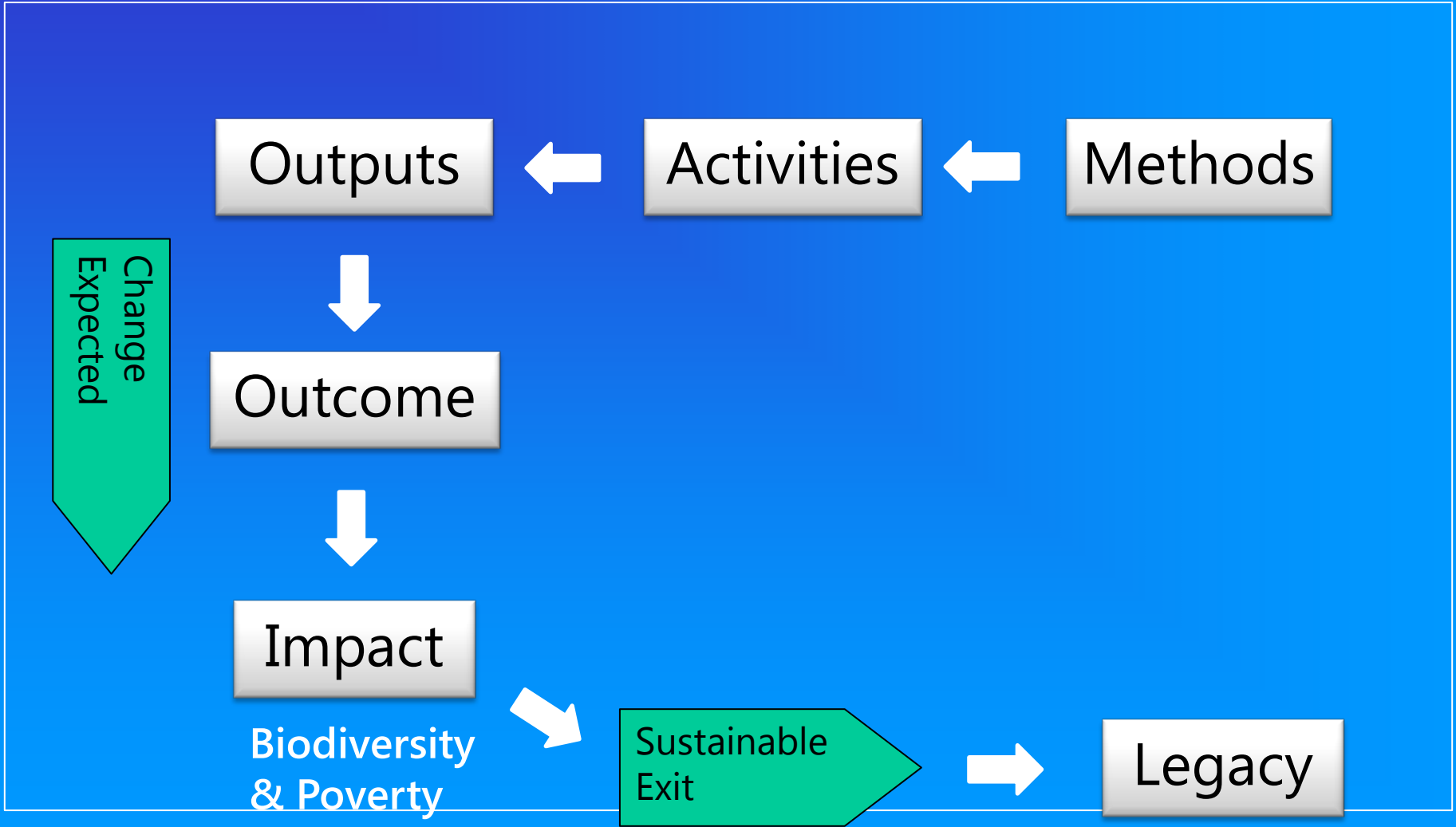


Impact

- Long term change that your project's outcome will contribute to.
- In the case of Darwin the impact needs to have a sustainable management of biodiversity and a poverty reduction impact



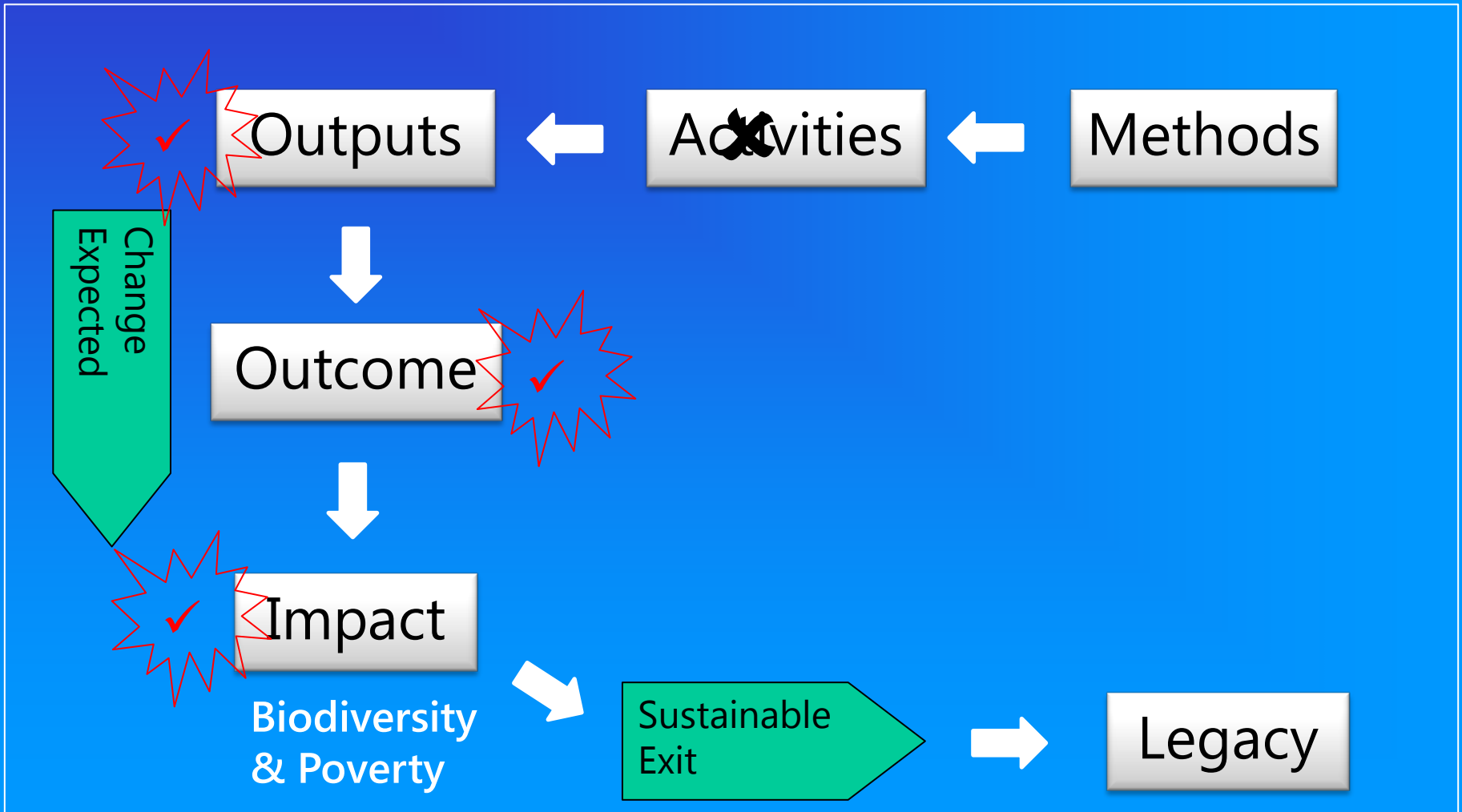
An implementable concept





Afternoon Session

Adding Indicators



The M&E Plan – Q27





Things to think about

- ☑ Timing/Sequencing - When do they measure it?
- ☑ Who is responsible – what is the chain of command?
- ☑ Who needs to be involved?
- ☑ What aspects are you measuring?
- ☑ How do you measure it?
- ☑ Resources – people, money, infrastructure – are these included in your proposal?



Exercise

- Using the SMART indicators you now have from the previous exercise, prepare a simple M&E plan.
- Matrix will be provided.