




14 – 18 February 2011  
Tun Sakaran Marine Park


21 – 25 February 2011  
Tunku Abdul Rahman Park, Kota Kinabalu, Sabah

## CORAL FINDER WORKSHOP RESULTS




### Coral identification needs

- Current level of coral identification needed:  
None (4), Growth form (3), Family (2), Genus (2), Species (3)
- Current coral identification skills:  
New to coral identification (8), Growth form (1), Some genera (5), Most genera (0), Some species (0)
- Skill level would like to attain:  
Growth forms (5), Genera (4), Species (5)
- Current roles  
Community monitoring (1), Research and monitoring (9), Teaching & communications (3), Natural Resource Management (1)
- Coral specialist? Yes (3), No (10), no answer (1)




### Familiarity with growth forms

- We analysed quiz data from participants with limited prior knowledge of coral genera to understand their familiarity with coral growth forms (e.g. branching, massive/boulder coral)
  - New to growth forms (3)
  - Limited knowledge of growth forms (2)
  - Some knowledge of growth forms (4)
  - Familiar with most growth forms (2)
- Additionally, 3 participants had knowledge of some genera



### In water experience

- We analysed dive/snorkel experience of participants as an indication of their likely familiarity with coral reefs
  - Some snorkelling and/or limited dive experience (6)
  - Moderate dive experience (5)
  - Considerable dive experience (3)




### Where did you start from?

- Average 10% genera correctly identified at start of workshop
- Several people new to coral identification

**Workshop results: genus-level coral identifications**

■ Prior Knowledge Score ■ End of Workshop Score

10.5%



### How much did you learn?

- Average 76% genera correctly identified at end of workshop
- We identified 43 hard coral genera during field sessions

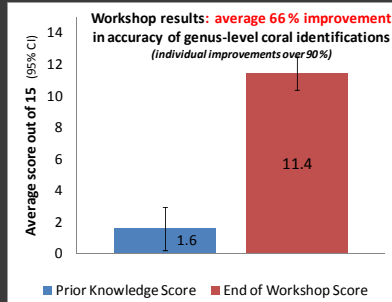
**Workshop results: from 10 to 76% correct genus-level coral identifications**

■ Prior Knowledge Score ■ End of Workshop Score

10.5% 76.2%

## How much did group improve?

- Improved by 66 percent on average (from 1.6/15 to 11.4/15)



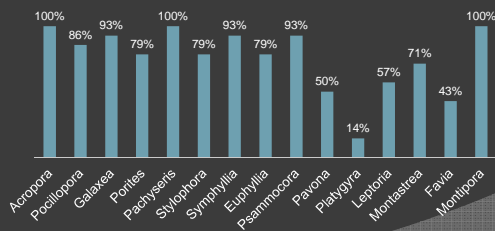
## Individual improvements?

- Up to 90+ percent improvements (average was 66%)



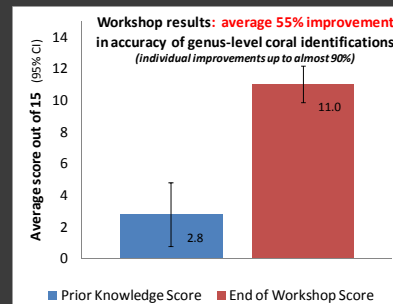
## Some genera are difficult

Proportion of participants selecting correct genus



## Tun Sakaran Marine Park

- Improved by 55 percent on average (from 2.8/15 to 11/15)



## End of workshop results

### Workshop 1:

- 93% of participants scored at least 50%
- 71% of participants scored 70% or more
- 57% of participants scored 80% or more
- Average improvement by 55%

### Workshop 2:

- All participants scored at least 50%
- 71% of participants scored 70% or more
- 50% of participants scored 80% or more
- Average improvement by 66%

## Application of Coral Finder Toolkit and Workshops

### For non-coral specialists

- Promote coral reef / biodiversity literacy from grass roots level upwards
- Rapidly develop basic-intermediate coral identification skills

### For current or future coral specialists

- Improved reliability and consistency of coral identification and monitoring
- Catalysts for working to a higher level in marine assessment initiatives → more accurate and detailed information on coral health and status

## Outcomes



- Access to the Coral Finder Toolkit and supporting resources
- Demonstrated improvement in quality and reliability of coral identification information
- An enlarged pool of people capable of collecting/understanding this information in the region
- Skills exchange and mentoring

Ultimately, will improve the flow of quality information to managers, organisations and communities. In turn, will lead to better conservation outcomes.

# Congratulations!

