



Darwin Initiative/D+ Project Half Year Report (due 31st October 2019)

Project reference	25-022
Project title	Restoring Coastal Fisheries through Sustainable Development in Indonesia.
Country(ies)/territory(ies)	Indonesia
Lead organisation	Yayasan Planet Indonesia
Partner(s)	Oceanwise Australia
Project leader	<i>Dr Ben Fitzpatrick</i>
Report date and number (e.g. HYR3)	<i>HYR2</i>
Project website/blog/social media etc.	<i>http://www.planetindonesia.org/</i>

1. Outline progress over the last 6 months (April – Sept) against the agreed baseline timetable for the project (if your project has started less than 6 months ago, please report on the period since start up to end September).

Our project focuses on creating nature-based solutions to catalyse sustainable development in coastal communities in West Kalimantan, Indonesia. We create conservation cooperatives with communities which are bi-lateral partnerships to both promote fair and equitable development in tandem with conservation. This project utilizes temporary mangrove reserves to restore coastal fisheries through providing community-based services. The main goal of our project is to improve community-led mangrove forest management in West Kalimantan, through integrating community-based services to reduce socio-economic inequalities. We create bi-lateral partnerships at the village level to help communities overcome the hardships of poverty while engaging them in new conservation and resource management plans.

To reduce socio-economic inequalities in the short term, this project intends to increase fishery and crab harvest rates for fishers; enroll 600 women and youth in the literacy program with >60% graduation rate; and, provide our healthcare program (family planning and women's hygiene/sanitation program) to 300 women. 40 individuals (10 per team over 4 teams) of the forest and marine patrol unit and fisheries observers trained by Planet Indonesia will participate in aspects of monitoring, patrolling, conducting fisheries surveys and environmental impact research and participate in mangrove reforestation activities preparing them for longer term responsibilities.

Output 1: Mangrove Forests (15000 ha) protected under temporary mangrove reserves

We have expanded our approach to new villages and are currently covering about half of the targeted landscape with 7,500 hectares of mangroves protected. A total of 2,197.35 hectares are currently protected through a temporary closure lasting from July – November 2019. We have expanded to include three new patrol teams for a total of four patrols teams with 19 members.

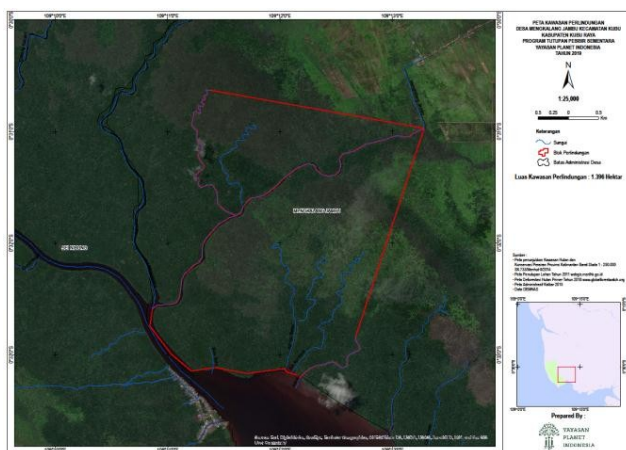
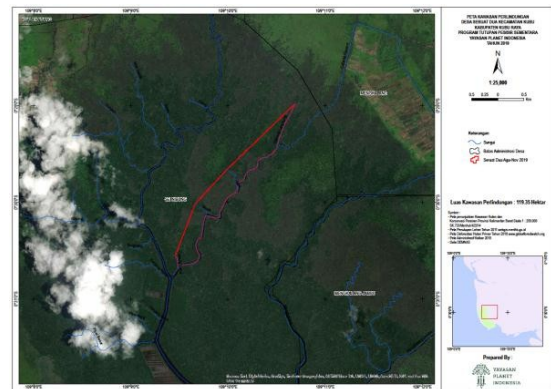
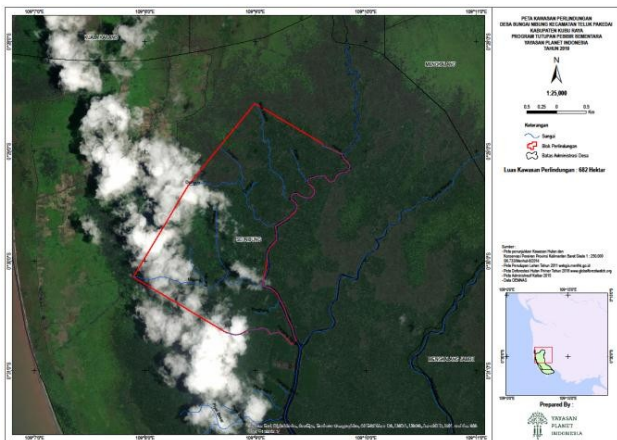
Table 1: Active patrol team and membership in the project area

Village Name	Number of Patrol Members
Sungai Nibung	2
Seruat Dua	6
Mengkalang	5
Mengkalang Jambu	6
Total	19 individuals

During this year we also have sought to improve the effectiveness of our patrols by expanding the use of the Spatial, Monitoring and Reporting Tool (SMART). Yayasan Planet Indonesia has been using the SMART system and is a certified trainer since 2016. However, we had previously focused on its use in terrestrial areas. During this year our terrestrial team has been working with our coastal and marine team to expand the use of SMART into mangrove areas to improve the effectiveness of our patrol teams.

Output 2: Increased harvest size by fishermen enrolled in program in TMRs zones.

Using our standard monitoring and evaluation strategy which collects data intensively at landing sites within the village for 21 days prior to a closure and 21 days post closure. Landing sites are monitored by a team consisting of one local who has been trained in data collection methods and a Planet Indonesia staff. Data collection starts at sun-up and finishes at sun-down. Data is collected on time the fishermen left, time the fishermen returned, number of crabs caught, weight of crabs, the crab class (Class A, Class B, and Class C) as well as measurements of the 5 largest crabs both width and length. As previously mentioned the current closure will open in early November, therefore we do not have the before-after-control-treatment data to report. Maps of the current closures are seen below:



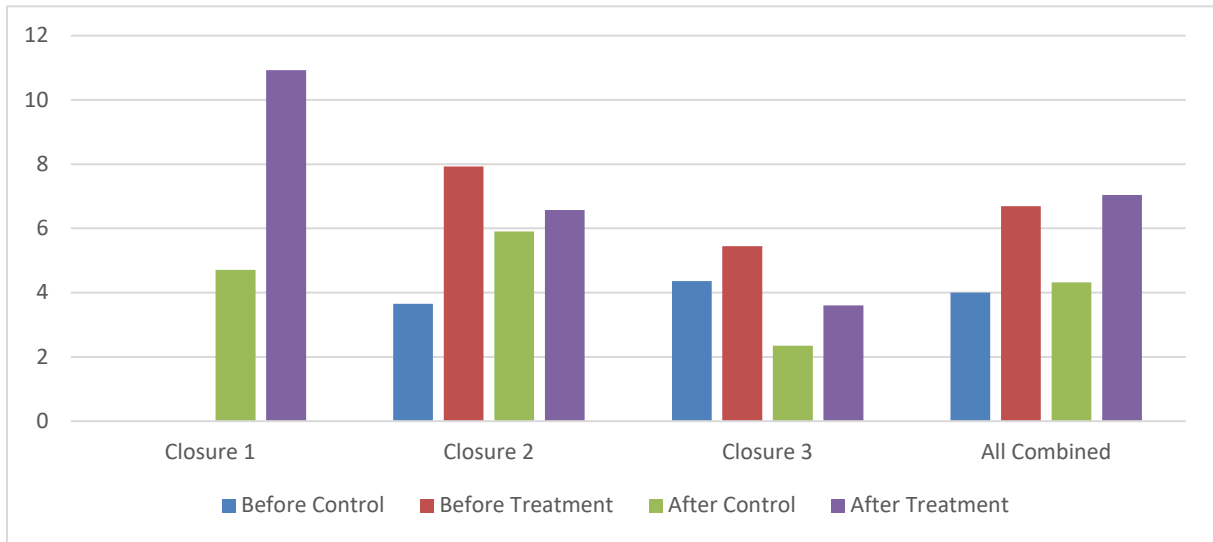


Figure 1: Fisheries dependent data - Shows before – after and control treatment data for the average weight of crabs caught across closures.

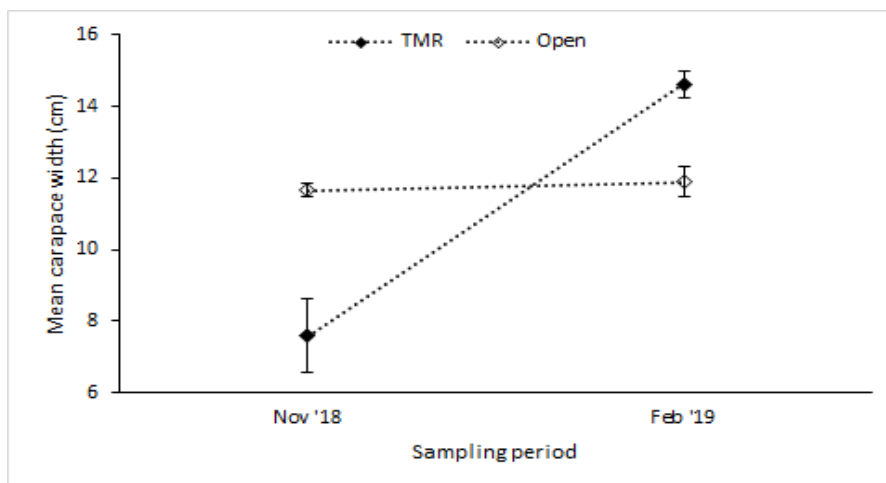


Figure 2: Fisheries independent data - Mean carapace width (cm) of crabs in TMR and open rivers before (November 2018) and after (February 2019) the third closure. Error bars represent standard error.

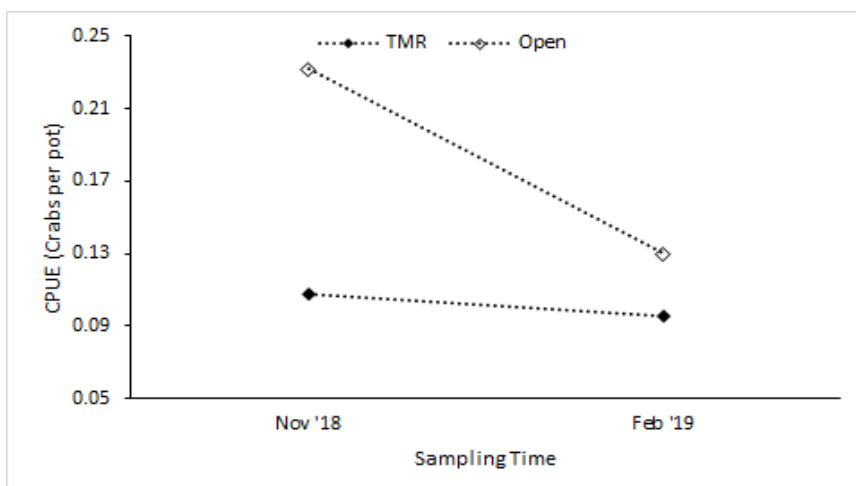


Figure 3: Fisheries independent data - Catch per unit of effort for crabs in TMR and open rivers before (November 2018) and after (February 2019) the third closure.

Output 3: Degraded forest patches and shrimp ponds enhanced and restored with mangrove plantings.

During this period Yayasan Planet Indonesia (YPI) began with mangrove restoration using the locally common *Rhizophora mucronata* species. A nursery of 18,000 seedlings was developed and have been planted on 4 hectares of shrimp aquaculture ponds in the project area. 25 individuals were involved in this and the activities were supported by villagers, patrol members, fishermen, and YPI staff.

Output 4: Small Micro-enterprises are Establish to economically empower local fishermen while engaging them in the TMR system.

As we have expanded our SMEs hosted through our Conservation Cooperative approach, to date a total of 558 households have enrolled across 5 cooperatives in the four villages we are currently working with. At the end of September 2019 total assets have grown to Rupiah or roughly pounds sterling. A total of rupiah or pounds sterling has been borrowed by members and loan repayment rate remains at 100%, meaning all loans have been returned on time to the Cooperative.

Table 2: Current formed cooperative involved in the program

No	Cooper name	Sub-village	Village	Sub-district	District
1.	Sungai Nibung Sejahtera	Tanjung Burung & Sungai Jebung	Sungai Nibung	Teluk Pakedai	Kubu Raya
2.	Tanjung Ruu Sejahtera	Tanjung Ruu	Sungai Nibung	Teluk Pakedai	Kubu Raya
3.	Mengkalang Jambu Mandiri	-	Mengkalang Jambu	Kubu	Kubu Raya
4.	Harapan bersama	-	Mengkalang	Kubu	Kubu Raya
5.	Seruat Dua Maju Bersama	-	Seruat Dua	Kubu	Kubu Raya

Table 3: Total member savings and assets of the group

Output 5: Literacy program continues running to improve capacity and job market access for women and youth.

During this past year we focused on expanding our literacy program to the new villages we are working in an opening up enrolment for the year long course.

Table 4: Shows the updated progress on the number of individuals who have enrolled in the literacy and education program over the past 6 months.

Village	Level 1		Level 2		Level 3		Level 4		Total
	Men	Women	Men	Women	Men	Women	Men	Women	
Mengkalang	0	32	6	1	8	4	11	5	67

Mengkalang Jambu	0	19	3	0	5	4	3	4	38
Seruat Dua	0	29	2	8	3	1	6	5	54
Tanjung Ruu	0	16	2	3	3	1	0	0	25
Total	0	96	13	12	19	10	20	14	184

Output 6: Family Planning and Health Sanitation program established to improve access for women/youth.

Our Population – Health – Environment program is currently active in the village of Sungai Nibung. There is a total of 17 health ambassadors that have been trained. All are women. On average, they visit 54 households a month reaching 237 individuals. Information on nutrition, family planning, WASH, and other information is provided via posters, games, and booklets. In the past quarter 24 households were given information on contraceptives and provided contraceptives upon request. We are currently working on expanding this approach to the village of Seruati Dua. We have just conducted the baseline surveys and FGDs, and will open the program up for health ambassador recruitment and training in November.

2a. Give details of any notable problems or unexpected developments/lessons learnt that the project has encountered over the last 6 months. Explain what impact these could have on the project and whether the changes will affect the budget and timetable of project activities.

We are happy to report that the last 6 months have been relatively ‘problem-free’ and we have not had any major unexpected developments or issues that impact the project, timetable, or budget. To date, we are on track to meet all of our targets by the end of the project period and some of our three year targets have been met faster than expected.

2b. Have any of these issues been discussed with LTS International and if so, have changes been made to the original agreement?

Discussed with LTS: Yes/No

Formal change request submitted: Yes/No

Received confirmation of change acceptance Yes/No

3a. Do you currently expect to have any significant (e.g., more than £5,000) underspend in your budget for this year?

Yes No Estimated underspend: £

3b. If yes, then you need to consider your project budget needs carefully. Please remember that any funds agreed for this financial year are only available to the project in this financial year.

If you anticipate a significant underspend because of justifiable changes within the project, please submit a rebudget Change Request as soon as possible. There is no guarantee that Defra will agree a rebudget so please ensure you have enough time to make appropriate changes if necessary.

4. Are there any other issues you wish to raise relating to the project or to Darwin's management, monitoring, or financial procedures?

If you were asked to provide a response to this year's annual report review with your next half year report, please attach your response to this document. Additionally, if you were funded under R25 and asked to provide further information by your first half year report, please attach your response as a separate document.

Please note: Any planned modifications to your project schedule/workplan can be discussed in this report but **should also be raised with LTS International through a Change Request. **Please DO NOT send these in the same email.****

Please send your **completed report by email** to Darwin-Projects@ltsi.co.uk. The report should be between 2-3 pages maximum. **Please state your project reference number in the header of your email message e.g. Subject: 25-035 Darwin Half Year Report**