

An initial guide for conservation planning in Maputaland, South Africa

The Maputaland centre of endemism is internationally recognised for its conservation value and contains a number of important protected areas (PAs).

Local communities and private landowners are interested in developing eco-tourism and sustainable harvesting projects in the region and these initiatives could play an important role in further protecting biodiversity and linking the existing PAs.

This map shows the results of a **preliminary** conservation planning exercise for the South African section of Maputaland, based on protecting important habitat types and maintaining connectivity between PAs.

Areas shown in red and yellow were identified as the most important for conservation, making them the preferred locations for new biodiversity-friendly projects.

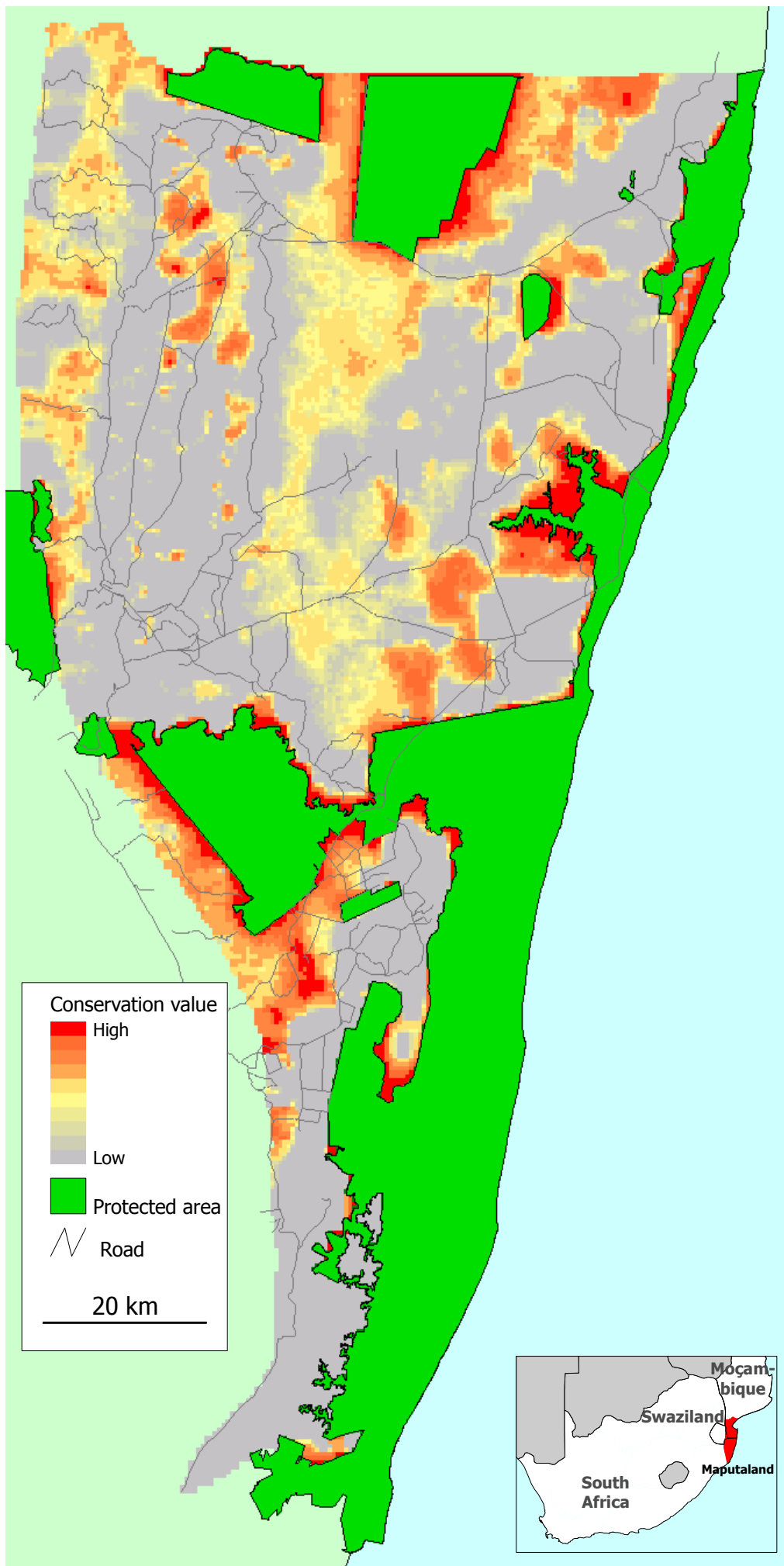
The final planning exercise will focus on the entire centre of endemism and will include more information on the biodiversity and people of the region.

DICE
UNIVERSITY OF KENT



BRITISH AIRWAYS

Assisting Conservation



For more information visit - <http://www.mosaic-conservation.org/maputaland>