



Darwin Initiative- R30

Stage 2 Webinar: What Makes a Good Application?



Welcome!



Patricia Mupeta-Muyamwa

- Human Rights in Conservation Director at Equitable Conservation Team
- Darwin Expert Committee member



Eilidh Young - NIRAS

- Senior Administrator for the Biodiversity Challenge Funds (BCFs) - Darwin Initiative, Darwin Plus and Illegal Wildlife Trade Challenge Fund (IWTCF)
- Darwin Initiative Focal Point



Andy East – NIRAS

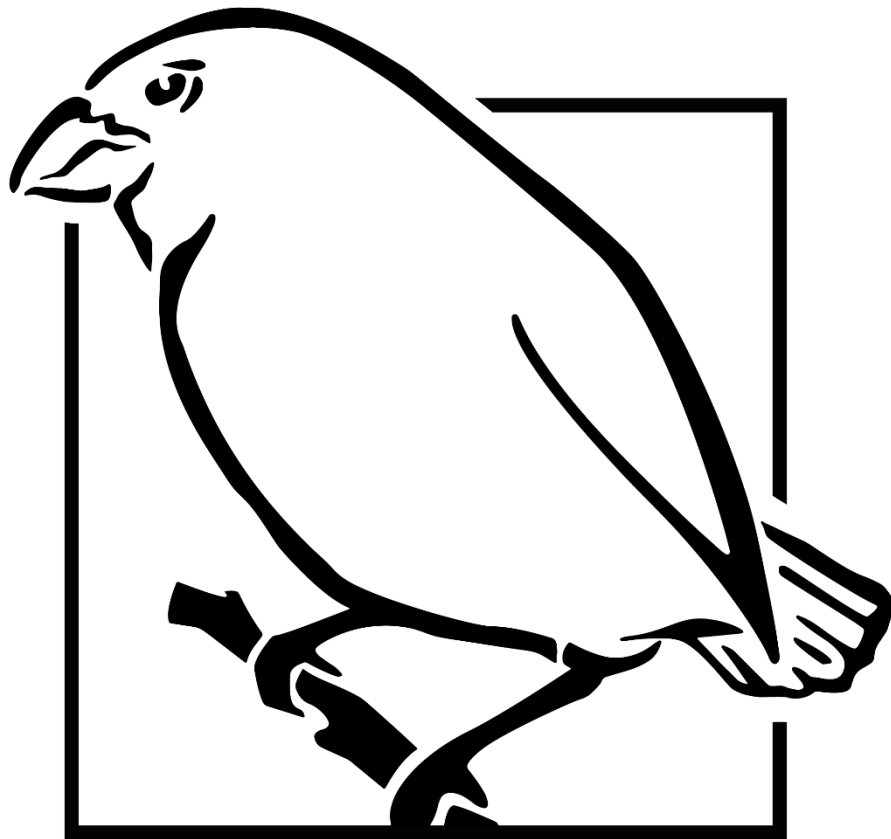
- BCFs Communications & Workshops Lead

Agenda & Housekeeping



- Welcome
- Darwin Expert Committee Presentation
- Questions

If you have any questions, please feel free to type them in the Q&A box and upvote any that you are interested in hearing the answer to.



DARWIN
INITIATIVE

Proposals:
What is the
Darwin Expert
Committee
looking for?

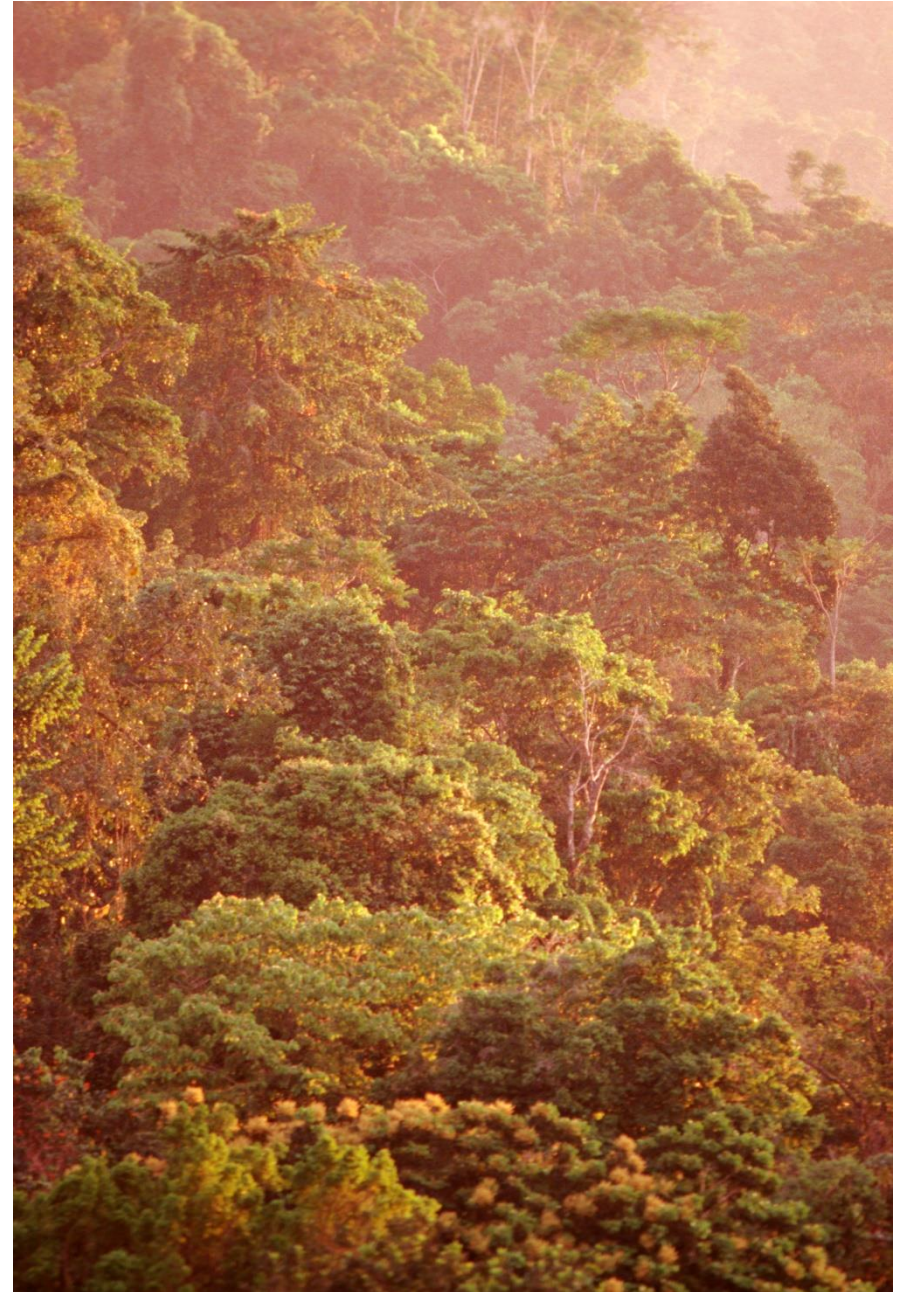


Who are the Darwin Expert Committee (DEC)?

- c. 20 experts - academics, conservation practitioners, policy researchers, independent consultants etc
- Contribute to Darwin strategy
- Act as ambassadors for Darwin
- Review and score proposals and make recommendations to Defra

Reviewing Of Applications

- Three DEC reviewers consider each application
- Scoring criteria in Guidance – same for both stages
- Sift meeting discussions on high and mid-scoring and differentials - agree shortlist at Stage 1 and at Stage 2
- DEC recommends a list to Ministers who make the final decision

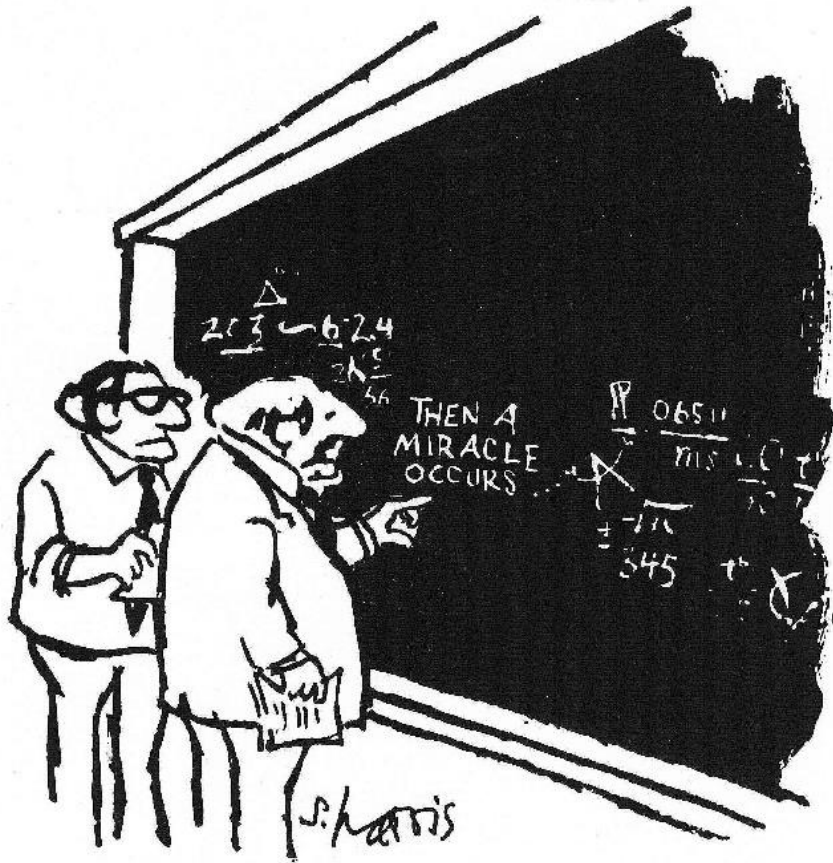




What makes a good application?

- Clearly written, concise and easily understandable
- Answer the questions
- Ambition and innovation rooted in reality
- Biodiversity and livelihoods outcomes, supporting international Conventions
- Clear route to outcomes and impact
- Compelling partners, CVs, LoS
- Clear and realistic Theory of Change
- Builds off best practices and evidence
- How to embeds equity, gender, youth.

Project logic



"I think you should be more explicit here in step two."

- Underlying problem statement and project logic are vital
- Should be clear from a strong logframe.....

| | INDICATORS | MEANS OF VERIFICATION |
|---|---|--|
| Number of students. | Percentage of Grades 5-6 primary students continuing on to high school. | Comparison of primary high school enrolment records. |
| Reading proficiency among Grades 5-6. | Reading proficiency among children in Grades 5-6 | Six monthly reading proficiency tests using national assessment tests. |
| Number of students with summer reading camps. | Number of students completing reading summer camp. | Summer camp attendance records. |
| Number of students attending summer camps. | Number of summer camps. | Summer camp records. |

THEN

IF **AND**

logframe

- Central to reviewers' assessment of your application
- Sense check – how will the activities - outputs - outcomes - impact chain work....
- Think about your assumptions and challenge them
- Specific targets and baselines – better to have numbers than loose percentages
- Keep it clear - reviewers will read lots of logframes....

Key things to remember

- Address any feedback from Stage 1
- Title – clear but interesting – get our attention upfront
- Provide enough context - don't assume any prior knowledge
- Demonstrate credibility - partners, expertise, and track record (strong CVs help)
- Stick to word counts and don't rely on additional links or resources



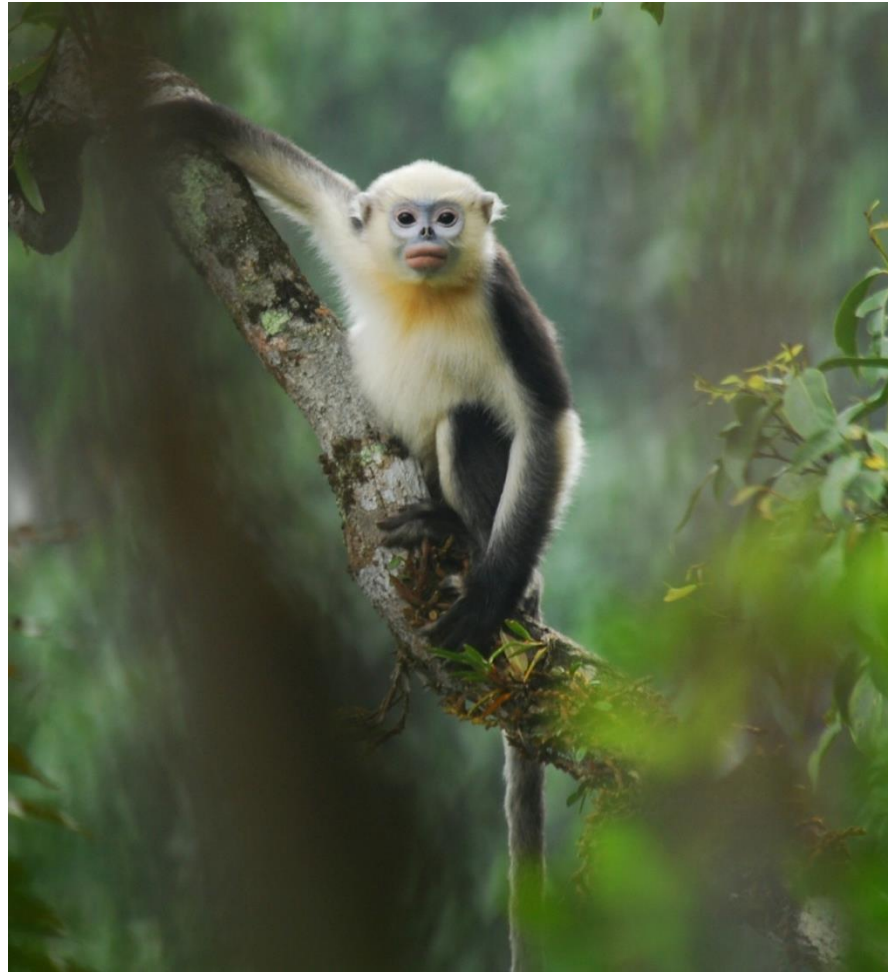
Key things to remember

- Demonstrate links to and knowledge of international Conventions and Treaties
- Explicit biodiversity outcomes - which species/ecosystems will benefit
- Explicit poverty outcomes - tangible improvements in well-being.
- Strong gender considerations

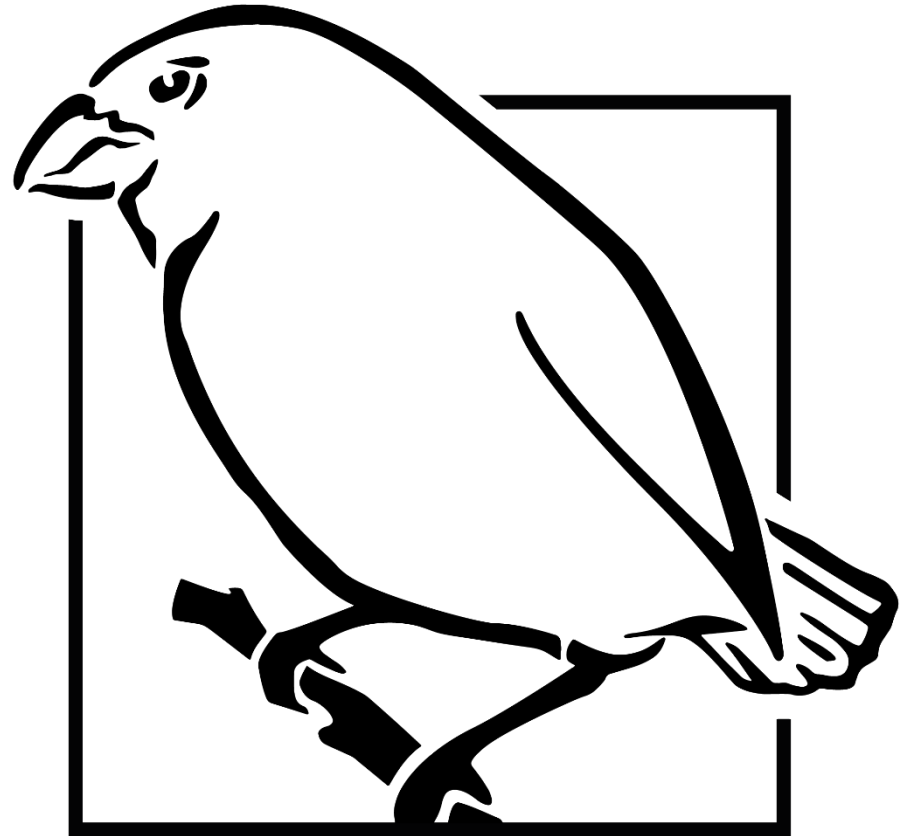


Key things to remember

- Well articulated changes – and explain how will be measured
- M&E plan should align with the log-frame
- Budget – balance between lead and partners, in-country and UK; co-finance
- **Make your application stand out!**
How does it differ from the norm? Is it innovative, using new methodology or scalable? *Or is it just really clear and well written....?*



Good luck!



DARWIN
INITIATIVE
